



Ten Years, One Vision

Prosperity starts at Origin

Coffee SR Code and EM Review

Webinar on Public Consultation Launch

19 May 2026



Objectives of the Webinar

- Provide a clear **overview of the review** of the Coffee Sustainability Reference Code (Coffee SR Code) and the Equivalence Mechanism (EM), and why it matters for the coffee sector.
- Explain how the **consultation draft was developed**, including the key steps and stakeholder inputs so far.
- **Introduce the public consultation**, including the consultation toolkit and what is being reviewed.
- Guide participants on **how to provide feedback**, including timelines and channels.
- Highlight the **importance of this consultation** in bringing together diverse expertise from across the sector to help shape the final version



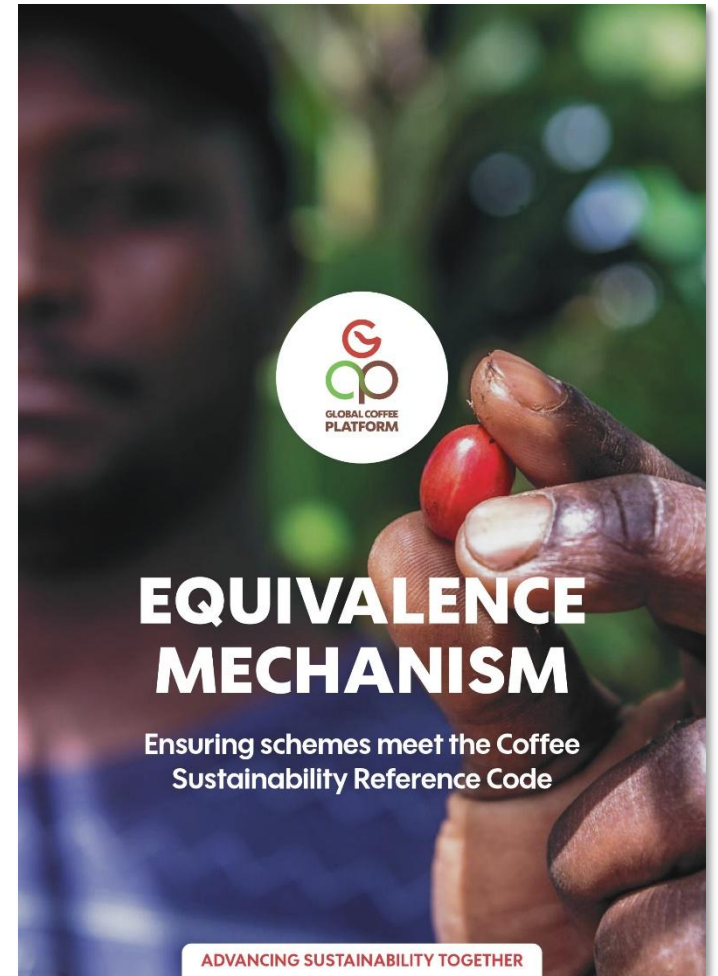
Objectives of the Coffee SR Code

- Provide a **common language** to describe and assess coffee sustainability (short-term)
- Improve **coordination and alignment** with supply chain partners (medium-term)
- Enable companies to **increase sourcing** from suppliers that meet baseline sustainability expectations (medium-term)
- Contribute to **improved sustainability performance and resilience** for producers in Coffee SR Code-aligned programs (long-term)



Objectives of the Equivalence Mechanism

- Establish a robust, independent process to **benchmark** sustainability schemes against the SR Code (short-term)
- **Increase confidence** in GCP-recognized schemes (short-term)
- **Increase sourcing** from GCP-recognized schemes (medium-term)
- **Increase Sustainable Coffee Purchase volumes** through GCP-recognized schemes (medium-term)
- **Improve sustainability performance and resilience** for producers in recognized schemes (long-term)



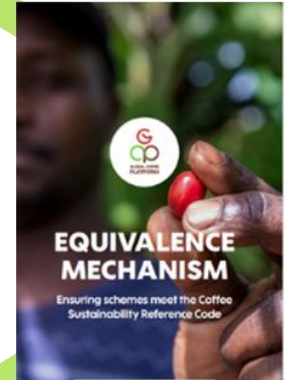
Sustainable Sourcing Approach



Coffee Sustainability Reference Code



GCP Equivalence Mechanism



GCP Collective Reporting





GCP Tools Under Review

Review of the Coffee SR Code and EM

- Regular review cycle: Every 5 years as part of the Equivalence Mechanism framework
- Aligned with good practice: Following the ISEAL Code of Good Practice
- Comprehensive review process: Including landscape analysis, technical input, and stakeholder engagement

BOARD MANDATE

Combined review of the Coffee SR Code and Equivalence Mechanism

Landscape analysis, technical input, consultations, and member engagement, leading to updated tools by the end of 2026 and clear implementation pathways for the scheme owners and users across the sector.

Guiding Principles: ways of working for the Review

Strive for consensus => majority



Farmer-centric – ensure that the experience, knowledge and realities of farmers are at the center of design and development with a clear value proposition



Inclusiveness – especially growers and smallholders communicating clear benefits



Continuous improvement – recognizing different starting points to drive progress and impact



Align, build upon and complement existing initiatives – acknowledge other approaches and innovations and consider emerging regulatory requirements



Transparency for stakeholders and openness for engagement – listen.



Learning – assessing the effectiveness of driving sustainability, unintended consequences, analysis of feedback of users, external research and industry best practices

Scope of the Review



REVIEW of Coffee SR Code

- In line with ISEAL Code of Good Practice
- Update context - regulatory frameworks (e.g. EUDR) and RegenCoffee



REVIEW of EM

- Two phase – 1. Operational Requirements (Current Phase)
2. Implementation (QIV)
- Feedback from recognized schemes and users of EM (e.g. roasters)
- Updated context including regulatory frameworks



ACROSS BOTH Reviews

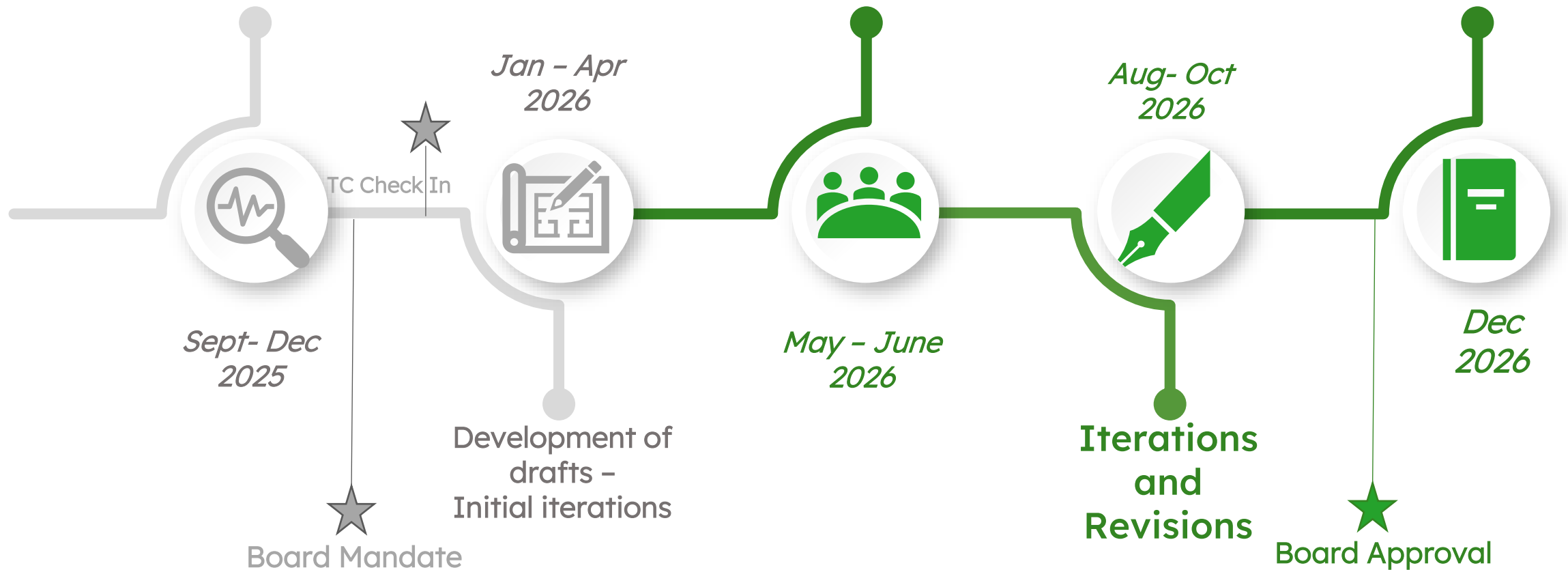
- Input from GCP members, partners, and the wider coffee sector
- Maintaining business relevance across the supply chain

High Level Timeline

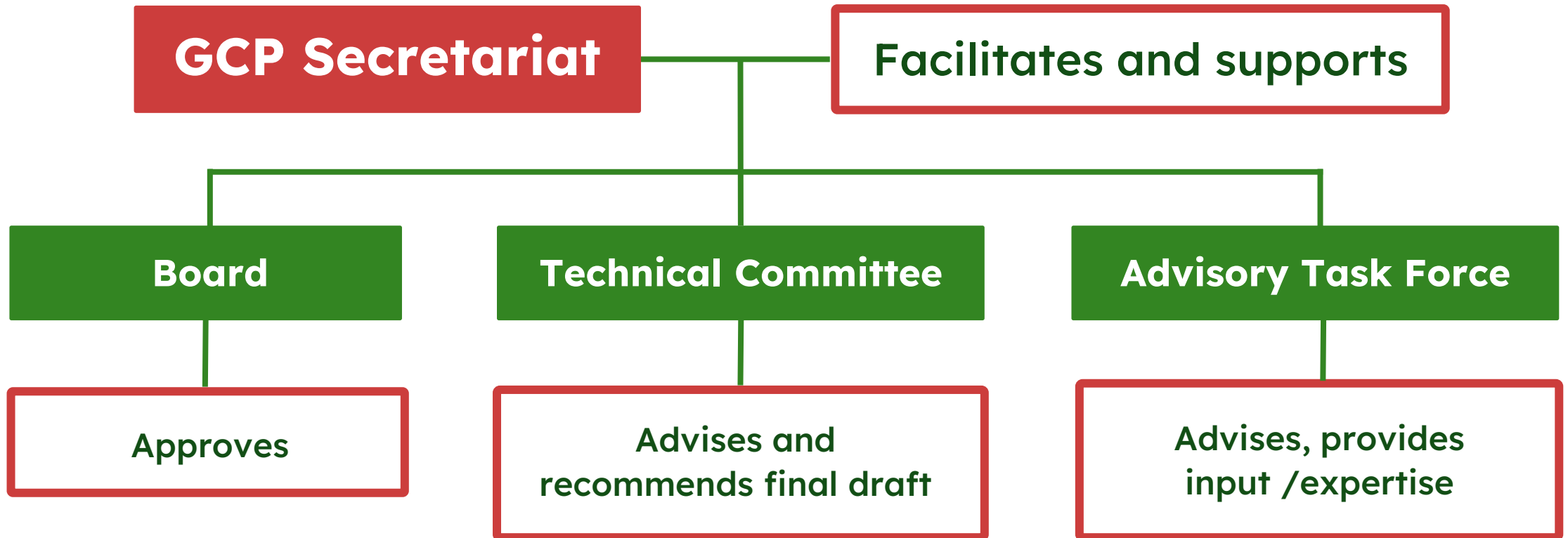
Laying the Groundwork:
Scoping, Strategic Issues,
Process and Roles (TC, ATF)

Consultation

Finalization



Roles and Governance



Assessment Phase – Oct – Dec 2025

ISEAL Code of Good Practice 6.15. As input to the standard's review and revision “The scheme owner understands the effectiveness of the standard and how it could be improved.”

GCP Theory of Change on what was **SUPPOSED** to HAPPEN

- Testing the relevance, coherence and effectiveness with stakeholders
- Analysis of existing tools
- Landscape analysis





Status of the Revision Process

How Initial Input and Evidence Were Gathered



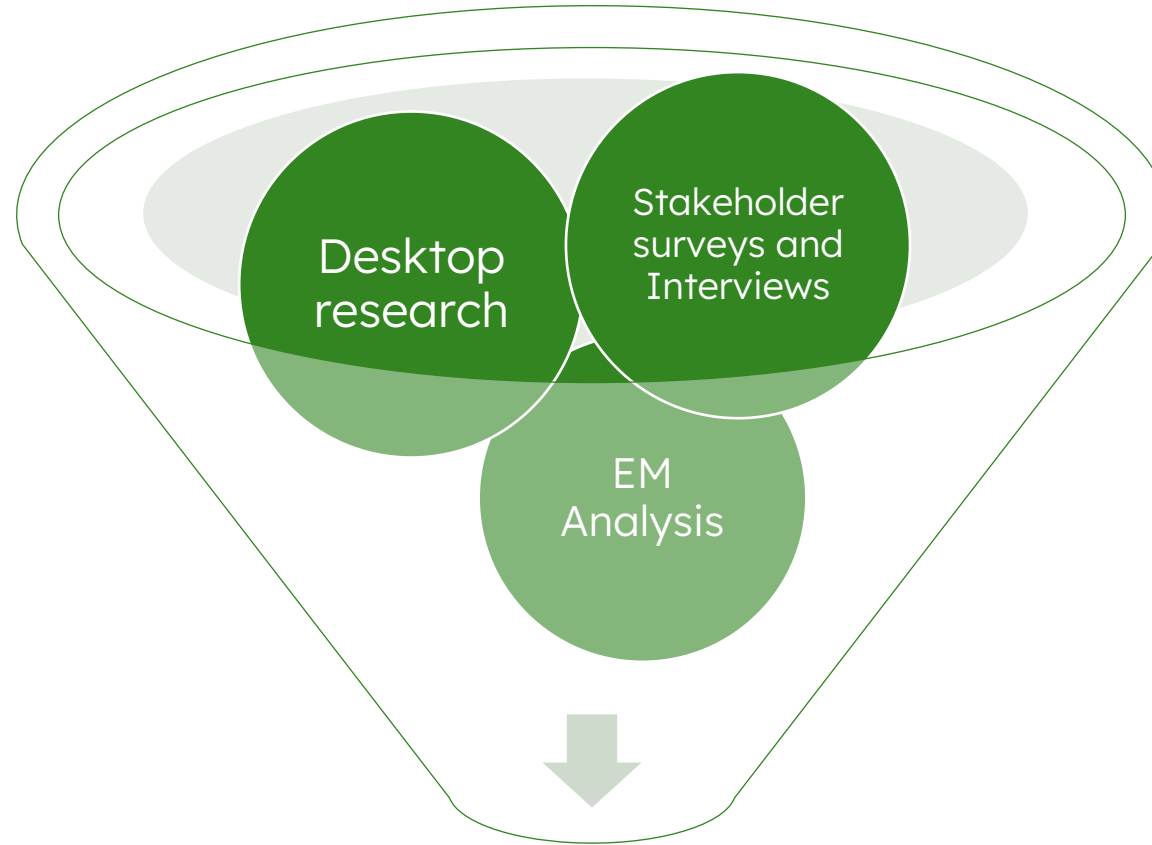
Conducted 2 workshops with Technical Committee (TC) /Advisory Task Force (ATF)



Collected 55 survey responses



Reviewed extensive documentation and conducted desk research



Key Takeaways and Recommendations



Conducted 8 interviews with key stakeholders



Held 2 workshops with the International Trade Centre (ITC)

Learnings From The Analysis

Key Takeaways from the Review

1. Strong alignment on direction

- Baseline approach remains relevant and aligned with sector expectations

2. Focus on improving clarity and usability

- Need for clearer application and more consistent interpretation

3. Gaps mainly in guidance, not requirements

- Strengthening guidance to better support implementation

4. Emphasis on practicality and context

- Balance regulatory expectations with realities for farmers
Avoid “tick-box” approaches

5. Direction of travel

- Stronger orientation toward due diligence. Risk-based approach (risk → action → monitoring)
- Continued focus on credibility and shared responsibility. Ensuring the tools remain practical and relevant

Note: Received great broader topic inputs (e.g. shared responsibility, costs) were noted for further consideration beyond the scope of this review but flagged for the TC/ATF

How These Insights Shape the Proposed Updates

Overall approach (Coffee SR Code & EM)

- Refinement, not redesign
- No major changes in intent or scope
- Improved clarity and structure
- Stronger, more practical guidance to support implementation
- Clearer interpretation and responsibilities for Scheme Owners
- Better alignment with due diligence and emerging sector expectations

Where changes are more pronounced: Equivalence Mechanism

- Stronger focus on accountability and transparency
- Clearer requirements for governance, data systems, and claims
- Better alignment with international good practices (e.g. ISO, ISEAL)

Coffee SR Code: Key Highlights of the Proposed Updates

- Clear emphasis on continuous improvement, positioning the Code as a shared baseline for sustainable coffee
- Strong support for maintaining a risk-based, context-driven approach, ensuring the Code remains flexible and applicable across different production contexts, and avoids overly prescriptive or “one-size-fits-all” requirements
- Strengthened alignment of the Code with due diligence approaches (risk assessment → action → monitoring) and evolving regulatory and sector expectations, while remaining practical and farmer-centered



EM: Key Highlights of the Proposed Updates

- Positive feedback on improved clarity and structure; strong support for EM as a baseline, with preference for transparency over tiering
- Support for strengthening governance, transparency, and data integrity, with clearer expectations on disclosure and accountability
- Endorsement of a risk- and due diligence-based approach, moving beyond “tick-box” compliance
- Emphasis on practical guidance for Scheme Owners, while recognizing limits across legal frameworks
- Reflections on future development, including continuous improvement, monitoring, and stronger oversight





The Public Consultation: How You Can Engage

Opening the Public Consultation!

Today, **May 19 2026**, we officially launch the 30-day public consultation on the review of the Coffee SR Code and the Equivalence Mechanism!

We invite stakeholders from across the coffee sector and beyond to:

- Review the proposed updates
- Share expertise, perspectives, and practical insights
- Help strengthen the relevance, clarity, and credibility of the tools

Your input will directly support the next phase of the review process and help shape the future development of the Coffee SR Code and EM.



Multiple ways to engage and provide feedback will be presented in the next section!

What Is the Consultation Toolkit?

All materials are available through the GCP website to support your participation:

<ul style="list-style-type: none">• Consultation Draft• Available in: English <p>Excel File</p>	<ul style="list-style-type: none">▪ Summary of Changes▪ Available in: English, Spanish, Portuguese, Bahasa, Vietnamese <p>Word File</p>	<ul style="list-style-type: none">▪ Webinar Slides▪ Available in: English, Spanish, Portuguese, Bahasa, Vietnamese <p>Power Point File</p>	<p>Video</p> <ul style="list-style-type: none">▪ 10–15 minutes▪ Subtitles available in English, Spanish, Portuguese, Bahasa, Vietnamese	<p>Consultation Surveys</p> <ul style="list-style-type: none">▪ Main: English, Spanish, Portuguese, Bahasa, Vietnamese▪ Technical: English
--	--	---	--	---

Consultation Draft

Requirement #	Current Requirement	Updated Requirement	Summary Rationale for Changes to Requirement
1.1.1	Producers are aware of GAP as defined by applicable national programs/standards, post-harvest handling practices, good management and quality practices that can be implemented at farm level.	Producers are aware of GAP as defined by applicable national programs/standards, post-harvest handling practices, good management and quality practices that can be implemented at farm level.	Wording simplified by removing "national" to improve flexibility across different contexts and schemes.
1.1.2	Producers are aware of the quality parameters of coffee beans (e.g. moisture content, physical defects, maximum residue limits).	Producers are aware of the quality parameters of coffee beans (e.g. moisture content, physical defects, maximum residue limits).	No change to requirement.

Summary of Changes

Coffee SR Code Economic Requirements			
Type	Ref	What changed	Rationale
UPDATED	1.1.1	Minor wording simplification (removal of "national")	Improves flexibility and applicability across contexts
UPDATED	1.1.4	Minor simplification. "Corporate governance" changed to "governance"	Broadens applicability beyond formal corporate structures
UPDATED	1.3.1	GESI analysis simplified to focus on barriers and opportunities	Improves usability and reduces complexity while maintaining intent

Consultation Survey (Main)

COFFEE SR CODE REQUIREMENTS

19. ECONOMIC DIMENSION *

New Risk Assessment Requirement

A new requirement (1.5.X) has been introduced to consolidate and strengthen the approach to risk assessment across the Coffee SR Code. Currently, elements related to practices, producer data, health and safety, environmental risks, and climate are addressed across multiple requirements. The proposed update brings these elements together into a single, structured risk assessment requirement.

To what extent do you agree that introducing a consolidated risk assessment requirement will improve the clarity, coherence, and practical implementation of risk assessment under the Coffee SR Code?

Strongly agree
 Agree
 Partly agree, but improvements are needed
 Disagree
 Strongly disagree
 Other / please specify

20. Optional: Please provide additional comments, questions or suggestions on the previous question.

Enter your answer

Consultation Survey (Technical)

Coffee SR Code Dimension 1: Economic

Use this section to provide requirement-specific feedback on the Economic Dimension. You **do not** need to comment on all requirements.

New dropdown lists will appear automatically. Select **"No More Comments"** when you have finished this section.

10. Please select the requirement you would like to comment on within the Economic Dimension

ECO-COM-1.1 *

1.1.5

11. Please provide your specific comments or suggestions for the selected requirement.

ECO-COM-1.1 *

I think that X,Y,Z...

How to Participate

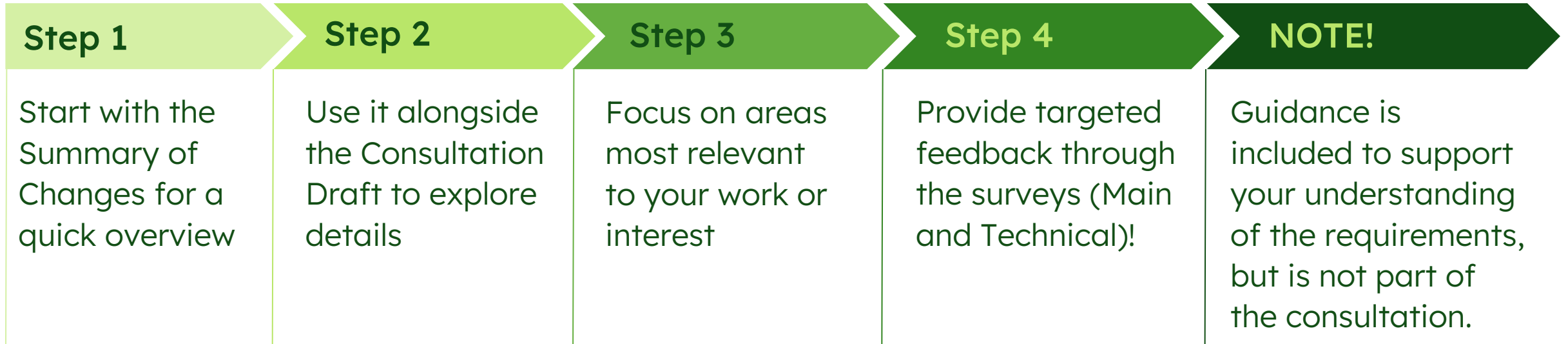
- Review the materials in the consultation toolkit
- Use the Summary of Changes to quickly understand what's new
- Explore the Consultation Draft for full details
- Share your input through the online surveys
- The surveys will remain open for the full 30-day consultation period!

Deadline: Friday, June 19 2026

Where to Access the Consultation Materials

- All materials available on the GCP website
- Access the consultation in multiple languages
- Be ready to scan the QR code in the next section or follow the links provided!

How to Navigate the Consultation Materials





**GLOBAL COFFEE
PLATFORM**

for a sustainable coffee world

Thank you!

www.globalcoffeeplatform.org

